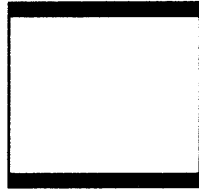


# **PROPERTY INFORMATION PACKAGE**

**MUTUAL  
REAL ESTATE  
CORPORATION**



**1630 OLD YORK ROAD  
SUITE 100  
ABINGTON, PENNSYLVANIA 19001  
(215) 784-9100 • FAX (215) 784-9540**

## **PROPERTY ADDRESS**

**119 S. EASTON ROAD  
GLENSIDE, PA**

### **MUTUAL REAL ESTATE CONTACT:**

**LOUIS J. SYRKUS**

## Summary of Pertinent Information

<b>ADDRESS:</b>	119 S. Easton Road Glenside, PA 19038
<b>TOWNSHIP:</b>	Cheltenham
<b>COUNTY:</b>	Montgomery
<b>STATE:</b>	Pennsylvania
<b>BUILDING SIZE:</b>	8,395 Square Feet
<b>PROPERTY DESCRIPTION:</b>	Two Story multi tenant office building with lower level, attractive exterior, ample side and rear off street parking, plenty of on street parking, multiple perimeter windows.
<b>ZONING:</b>	C3- Commercial and Business Districts
<b>SPACE AVAILABLE:</b>	Suite 100- B- ±460 Square Feet
<b>BUILDING ACCESS:</b>	Entrance can be made either from Easton Road in the Front of the Building or directly from the Rear Parking Lot.
<b>HVAC SYSTEM:</b>	100% Heated & Air Conditioned.
<b>REST ROOM FACILITIES:</b>	Both a Men's Room and a Ladies' Room are located on the Second Floor.
<b>PUBLIC TRANSPORTATION:</b>	Easy access to SEPTA 22 and 77 Buses and R 1 and R 5 Regional Rail Lines (at the Glenside Station).

The foregoing information was furnished to us by sources which we deem to be reliable, but no warranty or representation is made as to the accuracy thereof. Subject to correction of errors, omissions, change of price, prior sale or withdrawal from market without notice. No liability of any kind is to be imposed on the Broker herein.

**MISCELLANEOUS:**

Conveniently located in the heart of Glenside's Shopping and Business District. This property is on Easton Road and is in close proximity to Limekiln Pike (Rt. 152), Cheltenham Avenue, Old York Road (Rt. 611), and minutes to Rt. 309 and the Pennsylvania Turnpike.

**RENTAL RATE:**

\$ 500.00 per month for Suite 100-B, inclusive of utilities & cleaning.

The foregoing information was furnished to us by sources which we deem to be reliable, but no warranty or representation is made as to the accuracy thereof. Subject to correction of errors, omissions, change of price, prior sale or withdrawal from market without notice. No liability of any kind is to be imposed on the Broker herein.



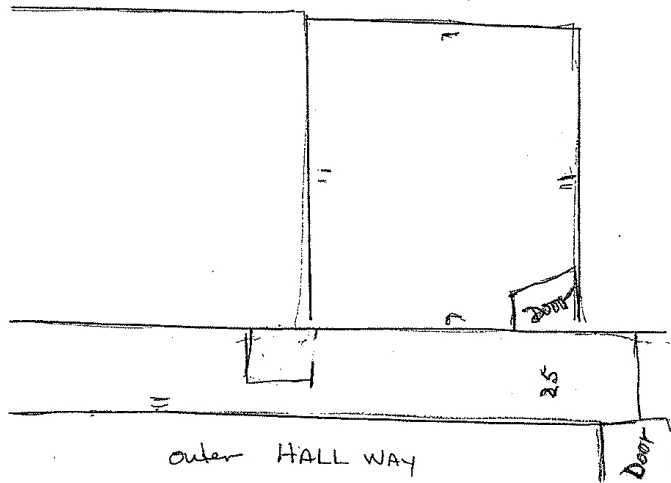
## **119 S. Easton Road**

**(Showing the Front Entrance, Side off Street Parking, Access to Rear Parking, and off Street Parking)**

The foregoing information was furnished to us by sources which we deem to be reliable, but no warranty or representation is made as to the accuracy thereof. Subject to correction of errors, omissions, change of price, prior sale or withdrawal from market without notice. No liability of any kind is to be imposed on the Broker herein.

119 S. EASTON ROAD - SUITE 104

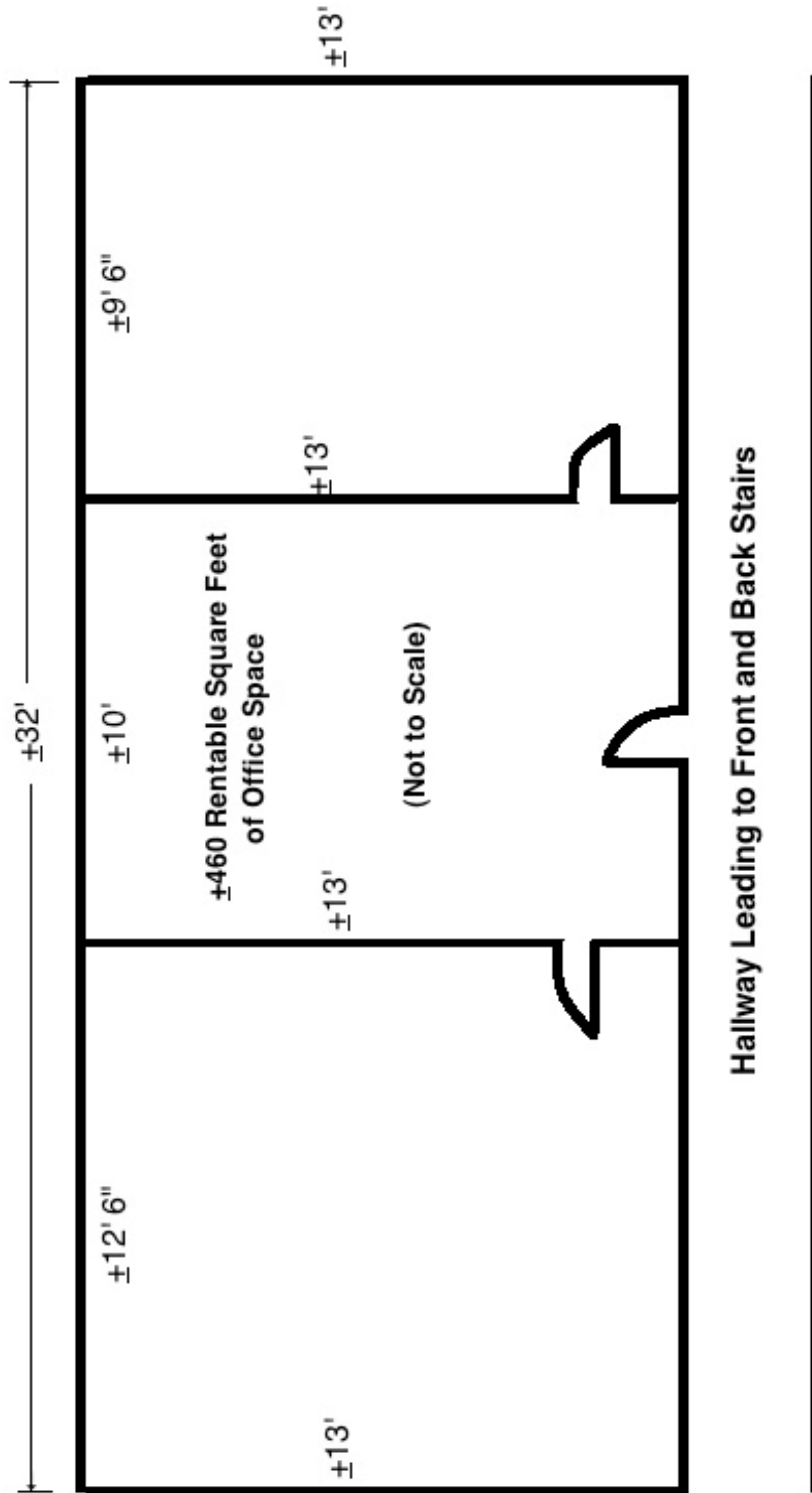
Lower Level



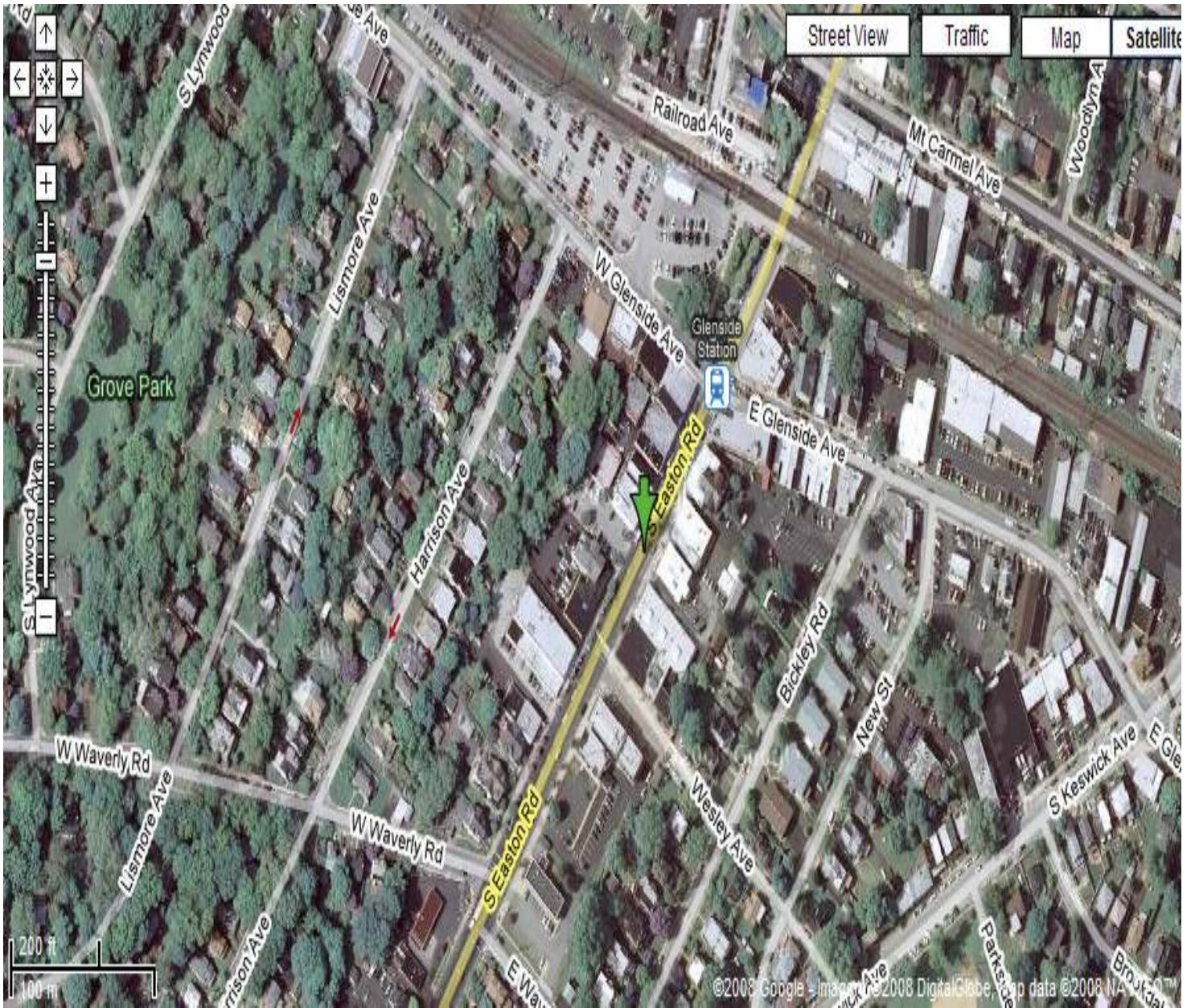
NOT TO SCALE

The foregoing information was furnished to us by sources which we deem to be reliable, but no warranty or representation is made as to the accuracy thereof. Subject to correction of errors, omissions, change of price, prior sale or withdrawal from market without notice. No liability of any kind is to be imposed on the Broker herein.

**119 S. EASTON ROAD  
SUITE 100- B**

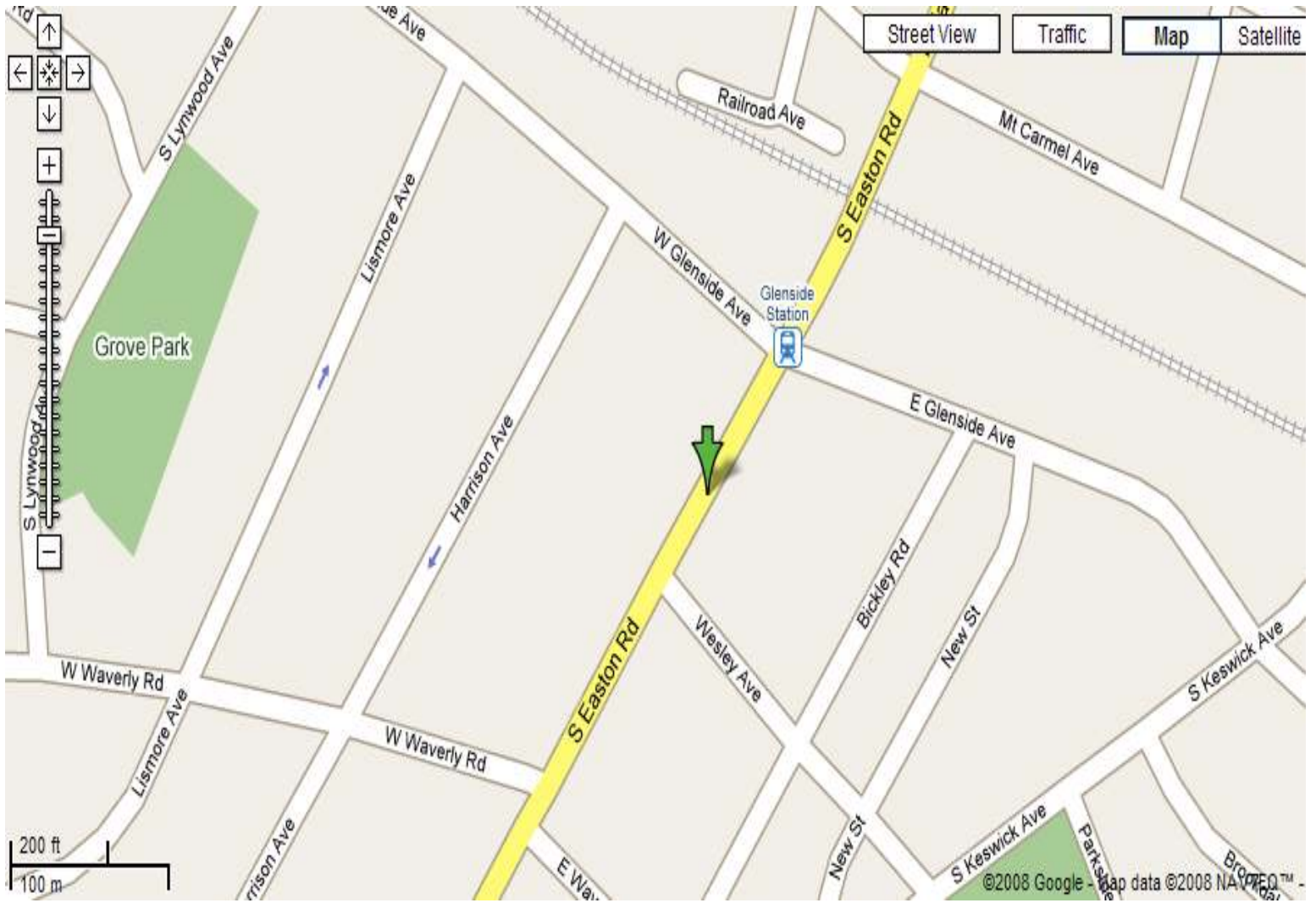


The foregoing information was furnished to us by sources which we deem to be reliable, but no warranty or representation is made as to the accuracy thereof. Subject to correction of errors, omissions, change of price, prior sale or withdrawal from market without notice. No liability of any kind is to be imposed on the Broker herein.



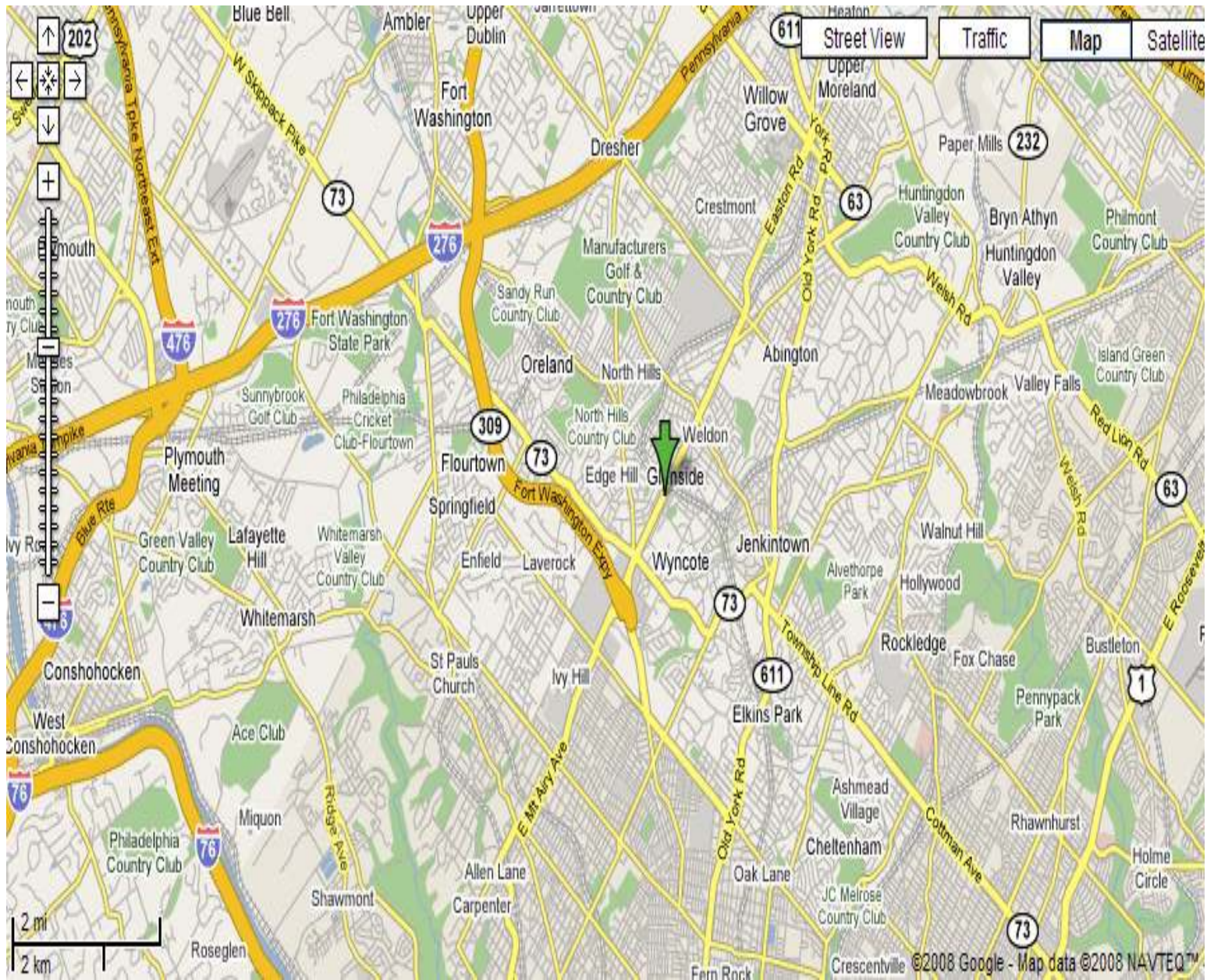
## AERIAL VIEW

The foregoing information was furnished to us by sources which we deem to be reliable, but no warranty or representation is made as to the accuracy thereof. Subject to correction of errors, omissions, change of price, prior sale or withdrawal from market without notice. No liability of any kind is to be imposed on the Broker herein.



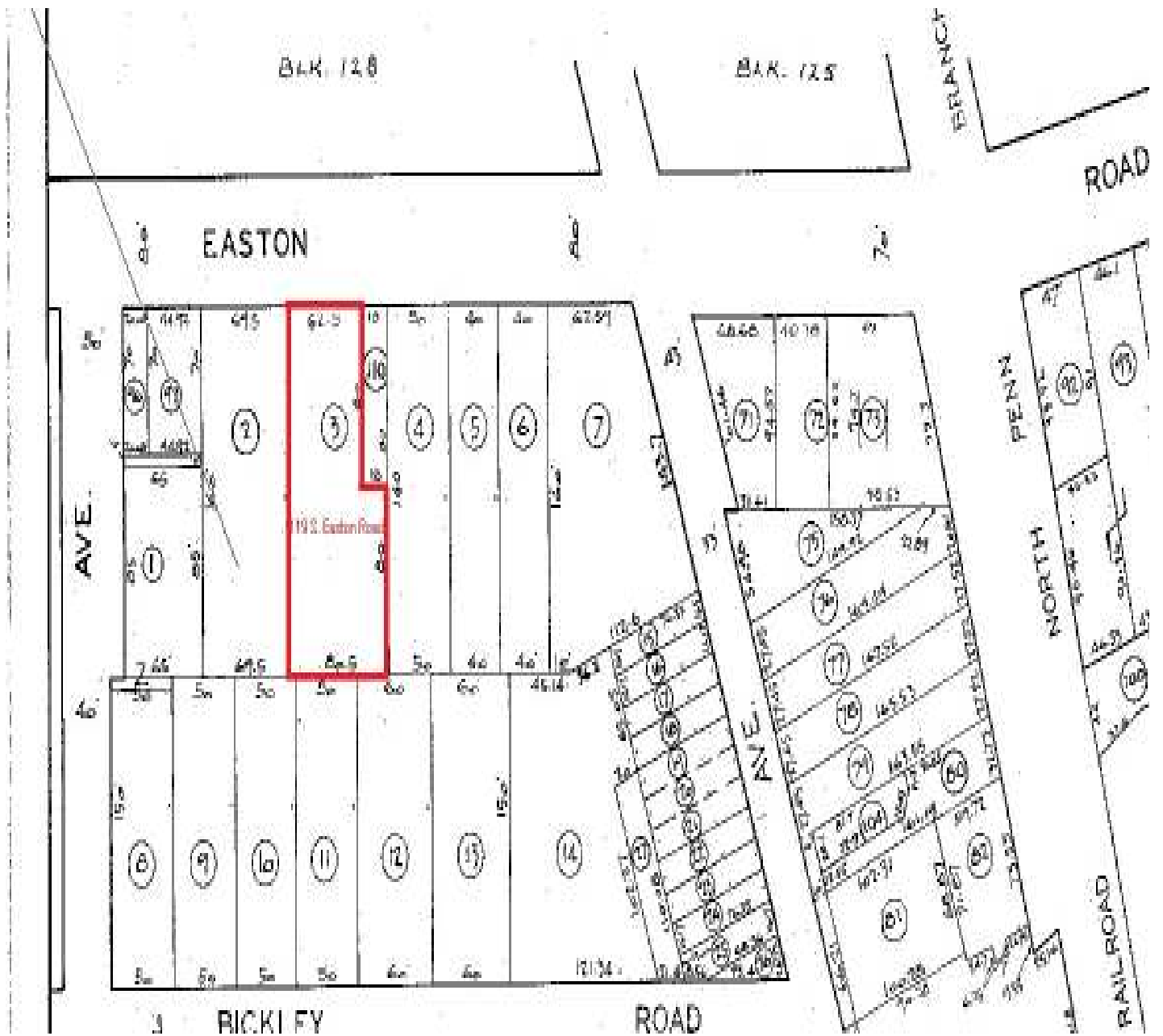
## LOCAL MAP

The foregoing information was furnished to us by sources which we deem to be reliable, but no warranty or representation is made as to the accuracy thereof. Subject to correction of errors, omissions, change of price, prior sale or withdrawal from market without notice. No liability of any kind is to be imposed on the Broker herein.



## REGIONAL MAP

The foregoing information was furnished to us by sources which we deem to be reliable, but no warranty or representation is made as to the accuracy thereof. Subject to correction of errors, omissions, change of price, prior sale or withdrawal from market without notice. No liability of any kind is to be imposed on the Broker herein.



## TAX MAP

The foregoing information was furnished to us by sources which we deem to be reliable, but no warranty or representation is made as to the accuracy thereof. Subject to correction of errors, omissions, change of price, prior sale or withdrawal from market without notice. No liability of any kind is to be imposed on the Broker herein.